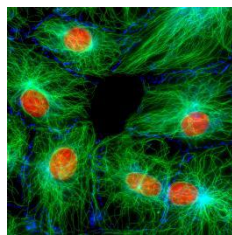
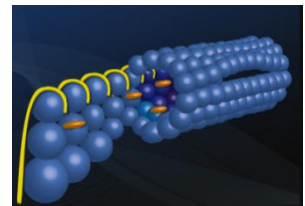
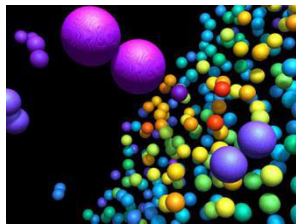
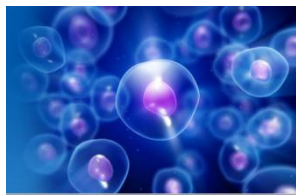




Puda Scientific Co.,Ltd





Brief Introduction

PUDA SCIENTIFIC CO., LTD

is a professional company which focuses on life sciences products and biotechnology. We offer you a wide range of research reagents: food safety test kits, animal disease kits, antibodies and recombinant protein, both unique and routine., with favorable price. Also we can offer custom monoclonal/polyclonal antibody production services and peptide synthesis services.

If you have any interest in any of our products and services; or have any questions in your research area; or you need help regarding research reagents, please feel free to contact with us.

By making full use of our knowledge and patience, we support the life sciences community with a level of commitment and responsibility befitting a company that is trusted by its valued customers.

Sincerely hope that we can build up both good friendship and business-ship with you in the near future.



Corporate Culture



Corporate Mission:

Adhering to the customer-centric philosophy, we provide global customers the excellent quality products and excellent after-sale services.



Corporate
Sprit:



Inovation

Profession

Credibility
and integrity

Progress



→ Catalogue

- 一、 ELISA KIT
 - Human ELISA KIT.....4-6
 - Rat ELISA KIT.....7
 - Mouse ELISA KIT.....8
 - Rabbit ELISA KIT.....9
 - Fish ELISA KIT.....10
 - Plant ELISA KIT.....11
 - Chicken ELISA KIT.....12
 - Porcine ELISA KIT.....13
 - Guinea Porcine ELISA KIT.....14
 - Sheep ELISA KIT.....15
 - Monkey ELISA KIT.....16
 - Goat ELISA KIT.....17
 - Canine ELISA KIT.....18
 - Bovine ELISA KIT.....19
- 二、 ELISA KIT For Food Safety&Drug Residues..... 20
- 三、 Antibody
 - Monoclonal Antibody.....21-22
 - Polyclonal Antibody.....23-26
 - Protein & Peptide.....27-28
- 四、 Others
 - ELISA KIT FAQs28
 - Antibody FAQs.....28-29
 - Order FAQs.....29





ELISA KIT

Assay Procedure

- 1 Prepare reagents, samples and standards as instructed.
- 2 Add 100µl standard or sample to each well. Incubate 2 hours at 37°C.
- 3 Remove the liquid of each well, don't wash.
- 4 Add 100µl Biotin-antibody(1x) to each well. Incubate 1 hour at 37°C.
- 5 Aspirate and wash 3 times.
- 6 Add 100µl HRP-avidin (1x) to each well. Incubate 1 hour at 37°C.
- 7 Aspirate and wash 5 times.
- 8 Add 90µl TMB Substrate to each well. Incubate 15-30 minutes at 37°C.
Protect from light.
- 9 Add 50µl Stop Solution to each well. Read at 450nm within 5 minutes.

***Samples may require dilution. Please refer to Sample Preparation section.**



Human ELISA Kit

PDT03642E	Human cytokeratin 17,CK-17 ELISA Kit
PDT02302E	Human cytokeratin 18,CK-18 ELISA Kit
PDT02310E	Human cytokeratin 19,CK-19 ELISA Kit
PDT03480E	Human cytokeratin 20,CK20 ELISA Kit
PDT02732E	Human cytokeratin fragment antigen 21-1,CYFRA21-1 ELISA Kit
PDT02160E	Human cytokeratin High Molecular Weight,CK-HMW ELISA Kit
PDT02135E	Human cytokeratin Low Molecular Weight,CK-LMW ELISA Kit
PDT02182E	Human cytokinin MB,CKMB ELISA Kit
PDT02775E	Human cytoplasmic immunoglobulin,Clg ELISA Kit
PDT03236E	Human cytosolic phospholipase A2,cPLA2 ELISA Kit
PDT04161E	Human Cytosolic Phospholipase A2- α (CPLA2- α) ELISA KIT
PDT02301E	Human cytotoxic T lymphocyte associated antigen 4,CTLA-4 ELISA Kit
PDT02299E	Human cytotoxin,CTX ELISA Kit
PDT02300E	Human Cytotoxin-associated protein,CagA ELISA Kit
PDT03025E	Human cytovillin/ezrin ELISA Kit
PDT00575E	Human D-Dimer,D2D ELISA Kit
PDT03811E	Human deacylase ELISA kit
PDT00544E	Human decay-accelerating activity,DAF ELISA Kit
PDT03176E	Human decay-accelerating factor,DAF ELISA Kit
PDT01394E	Human Dehydroepiandrosterone S7,DHEA-S7 ELISA Kit
PDT00529E	Human Dehydroepiandrosterone sulfate,DHEA-S ELISA Kit
PDT01391E	Human Dehydroepiandrosterone,DHEA ELISA Kit
PDT02932E	Human delta sleep-inducing peptide,DSIP ELISA Kit
PDT00459E	Human dengue fever antibody,DF ELISA Kit
PDT04119E	Human Dentin Matrix Protein 1 (DMP1) ELISA KIT
PDT02829E	Human Deoxypyridinoline crosslinks,DPD ELISA Kit
PDT01564E	Human deoxypyridinoline,DPD ELISA Kit
PDT02199E	Human deoxyribonuclease I ,DNase- I ELISA Kit
PDT02195E	Human deoxyribonucleic protein antibody,DNP-Ab ELISA Kit
PDT03070E	Human deoxyuridinetriphate,DUTP ELISA Kit
PDT02712E	Human dermatan sulfate,DS ELISA Kit
PDT03398E	Human dermato-pontin,DPT ELISA Kit
PDT03681E	Human Desert hedgehog (DHH) ELISA kit
PDT01355E	Human desmin,Des ELISA Kit
PDT02718E	Human desmogleins 1,Dsg-1 ELISA Kit
PDT03974E	Human Desmosine ELISA kit
PDT02161E	Human deubiquitinating enzyme,DUB ELISA Kit
PDT03230E	Human diamine oxidase,DAO ELISA Kit
PDT03201E	Human Dickkopf 1,DKK1 ELISA Kit
PDT03523E	Human dihydropyrimidinase-like 2,DPYSL2 ELISA Kit
PDT03549E	Human dihydropyrimidinase-like 3,DPYSL3 ELISA Kit
PDT01065E	Human Dihydrotestosterone,DHT ELISA Kit
PDT01677E	Human dipeptidyl peptldase IV,DPPIV ELISA Kit



PDT00473E	Human Diphtheria antibody ELISA Kit
PDT03488E	Human D-Lactate Dehydrogenase,D-LDH ELISA Kit
PDT03073E	Human DNA Binding Protein,DBP ELISA Kit
PDT02139E	Human dopachrome tautomerase,DT ELISA Kit
PDT02423E	Human Dopamine D1 receptor,D1R ELISA Kit
PDT03280E	Human dopamine D2 receptor,D2R ELISA Kit
PDT02780E	Human dopamine decarboxylase,DDC ELISA Kit
PDT00715E	Human dopamine,DA ELISA KIT
PDT02779E	Human dopamine- β -hydroxylase,DBH ELISA Kit
PDT02235E	Human dynamin 2,DNM2 ELISA Kit
PDT02259E	Human dynorphin,Dyn ELISA Kit
PDT03021E	Human dystrophin ELISA Kit
PDT02100E	Human E1/ubiquitin-activating enzyme,E1/UBAE ELISA Kit
PDT02136E	Human E2/ubiquitin-conjugating enzyme,E2/UBCE ELISA Kit
PDT02145E	Human E3/ubiquitin-protein ligase,E3/UBPL ELISA Kit
PDT00033E	Human E-Cadherin,E-Cad ELISA Kit
PDT02107E	Human echinococcus antibody IgG ELISA Kit
PDT00454E	Human EchoVirus IgM,ECHO IgM ELISA Kit
PDT02846E	Human Elastase ELISA Kit
PDT02466E	Human Elastin,ELN ELISA Kit
PDT03400E	Human electron-transfer-flavoprotein beta polypeptide,ETFB ELISA Kit
PDT02325E	Human elongin A,EloA ELISA Kit
PDT00045E	Human Endocrine gland vascular endothelial growth factor,EG-VEGF ELISA Kit
PDT00542E	Human Endometrium Antibody,EMAb ELISA Kit
PDT03205E	Human endomorphin-2,EM-2 ELISA Kit
PDT01154E	Human Endostatin,ES ELISA Kit
PDT01382E	Human Endothelial lipase,EL ELISA Kit
PDT01730E	Human Endothelial nitric oxide synthase 3,eNOS-3 ELISA Kit
PDT01487E	Human Endothelial nitric oxide synthase,eNOS ELISA Kit
PDT00829E	Human Endothelin 1,ET-1 ELISA Kit
PDT01785E	Human endotoxin,ET ELISA Kit
PDT02248E	Human enkephalin,ENK ELISA Kit
PDT02234E	Human Entamoeba histolytica Antigen ELISA Kit
PDT02116E	Human Enterovirus ELISA Kit
PDT03495E	Human eosinophil cationic protein,ECP ELISA Kit
PDT00046E	Human eosinophil chemotactic factor,ECF ELISA Kit
PDT03550E	Human eosinophil-associated ribonuclease A family member 1,EAR1 ELISA KIT
PDT03553E	Human eosinophil-associated ribonuclease A family member 12,EAR12 ELISA KIT
PDT03551E	Human eosinophil-associated ribonuclease A family member 2 ELISA Kit
PDT03552E	Human eosinophil-associated ribonuclease A family member 3,EAR3 ELISA Kit
PDT00048E	Human Eotaxin 1 ELISA Kit
PDT03244E	Human Eotaxin 2/CCL24 ELISA Kit
PDT02239E	Human epidemic parotitis,EP ELISA Kit
PDT02650E	Human epidermal basement membrane zone,EBMZ ELISA Kit
PDT03292E	Human epidermal growth factor receptor 2,HER2 ELISA Kit



PDT03748E	Human epidermal growth factor receptor,EGFR ELISA Kit
PDT01202E	Human Epidermal growth factor,EGF ELISA Kit
PDT02776E	Human epidermal keratin,EK ELISA Kit
PDT04021E	Human epididymal protein 4(HE4) ELISA kit
PDT01829E	Human Epinephrine/Adrenaline,EPI ELISA Kit
PDT02734E	Human Epithelial Cell Adhesion Molecule,Ep-CAM ELISA Kit
PDT02270E	Human Epithelial membrane antigen,EMA ELISA Kit
PDT01343E	Human Epithelial neutrophil activating peptide 78,ENA-78 ELISA Kit
PDT02271E	Human epithelial specific antigen,ESA ELISA Kit
PDT00462E	Human epstein-barr virus IgA,EBv IgA ELISA Kit
PDT00461E	Human epstein-barr virus IgG,EBv IgG ELISA Kit
PDT00463E	Human epstein-barr virus IgM,EBv IgM ELISA Kit
PDT02625E	Human erythrocyte membrane protein,EMP ELISA Kit
PDT02841E	Human erythropoiesis stimulating factor,ESF ELISA Kit
PDT00050E	Human Erythropoietin receptor,EPOR ELISA Kit
PDT00051E	Human Erythropoietin,EPO ELISA Kit
PDT00053E	Human E-Selectin ELISA kit
PDT01810E	Human Estradiol receptor,ER ELISA Kit
PDT00532E	Human Estradiol,E2 ELISA Kit
PDT00515E	Human Estriol,E3 ELISA Kit
PDT02123E	Human Estrogen Receptor,ER ELISA Kit
PDT00882E	Human estrogen,E ELISA Kit
PDT02122E	Human Estrogen-induced protein pS2 ELISA Kit
PDT03669E	Human estrone,E1 ELISA kit
PDT02759E	Human EuglobulinLysis,EL ELISA Kit
PDT02172E	Human extein ELISA Kit
PDT02486E	Human extracellular signal-regulated kinase,ERK ELISA Kit
PDT00440E	Human Extractable nuclear antigen,ENA ELISA Kit
PDT02408E	Human eye muscle antibody,EMAb ELISA Kit
PDT01545E	Human Factor VIII-related Antigen,FVIII _{Ag} ELISA Kit
PDT02573E	Human factor B,BF ELISA Kit
PDT00057E	Human Factor-related Apoptosis ligand,FASL ELISA Kit



Rat ELISA Kit

PDT04117E	Rat Adipocyte Fatty Acid Binding Protein 4(AFABP-4) ELISA KIT
PDT00869E	Rat adiponectin,ADP ELISA Kit
PDT00702E	rat adrencocorticotropic hormone,ACTH ELISA Kit
PDT02447E	Rat adrenergic alpha-1A receptor,ADRA1A ELISA Kit
PDT03159E	Rat adrenomedullin,ADM ELISA Kit
PDT02540E	Rat advanced glycation end products,AGEs ELISA Kit
PDT04114E	Rat Alanine Aminotransferase(ALT) ELISA KIT
PDT03310E	Rat alcohol dehydrogenase,ADH ELISA Kit
PDT03309E	Rat aldehyde dehydrogenase,ALDH ELISA Kit
PDT00847E	rat aldosterone,ALD ELISA Kit
PDT03318E	Rat alkaline phosphatase,ALP ELISA Kit
PDT03851E	Rat Alpha 2 Heremans Schmid Glycoprotein(AHSG) ELISA Kit
PDT01446E	Rat Alpha-fetoprotein,AFP ELISA Kit
PDT01871E	Rat alpha-granular membrane protein,GMP-140 ELISA Kit
PDT01514E	Rat alpha-L-fucosidase,AFU ELISA Kit
PDT02558E	Rat Alternative macrophage activation-associated CC chemokine 1,AMAC-1 ELISA Kit
PDT01696E	Rat Amylin ELISA Kit
PDT01467E	Rat amyloid beta peptide 1-40,A β 1-40 ELISA Kit
PDT03742E	Rat Androgen Binding Protein(ABP) ELISA Kit
PDT03291E	Rat androgen ELISA Kit
PDT00519E	Rat Androstenedione,ASD ELISA Kit
PDT00896E	Rat Angiogenin,ANG ELISA Kit
PDT00898E	Rat Angiopoietin 1,ANG-1 ELISA Kit
PDT00899E	Rat Angiopoietin 2,ANG-2 ELISA Kit
PDT03315E	Rat Angiopoietin 4,ANG-4 ELISA Kit
PDT00005E	Rat Angiotensin converting enzyme,ACE ELISA Kit
PDT01724E	Rat angiotensinogen,aGT ELISA Kit
PDT01687E	Rat angiotension I ,Ang- I ELISA Kit
PDT00008E	Rat angiotension II ,ANG- II ELISA Kit
PDT01846E	Rat annexin V ,ANX- V ELISA Kit
PDT03370E	Rat anti-Activin A receptor antibody(IgG),ACV-RAb(IgG) ELISA Kit
PDT03828E	Rat anti-Activin A receptor antibody(IgM),ACV-RAb(IgM) ELISA Kit
PDT01612E	Rat anti-alpha-Fodrin IgG/IgA, α -Fodrin IgG/IgA ELISA Kit
PDT01801E	Rat anti-cardiolipin antibody IgA,ACA-IgA ELISA Kit
PDT01803E	Rat anti-cardiolipin antibody IgG,ACA-IgG ELISA Kit
PDT01802E	rat anti-cardiolipin antibody IgM,ACA-IgM ELISA Kit
PDT00428E	Rat anti-centrol and centrosome antibody,ACA ELISA Kit
PDT03813E	Rat antidiuretic hormone/vasopressin/arginine vasopressin,ADH/VP/AVP ELISA Kit
PDT03325E	Rat anti-double stranded DNA,dsDNA ELISA KIT
PDT01967E	Rat anti-Endomysial Antibody IgA,EMA IgA ELISA Kit
PDT01844E	Rat anti-endothelial cell antibody,AECA ELISA Kit
PDT03250E	Rat Anti-glycoprotein 210,GP210 ELISA Kit
PDT03369E	Rat anti-gonadotropin-releasing hormone receptor antibody,GNRHR-Ab ELISA Kit



Mouse ELISA Kit

PDT00910E	Mouse 1,3-βD glucosidase ELISA Kit
PDT01757E	Mouse 15-lipoxygenase,15-LO/LOX ELISA Kit
PDT01741E	Mouse 16-αHydroxyestrogen 1,16-α OHE-1 ELISA Kit
PDT04108E	Mouse 17-alpha Methyltestosterone (17-αMT) ELISA KIT
PDT00126E	Mouse 17-Hydroxycorticosteroids,17-OHCS ELISA Kit
PDT00514E	Mouse 17-Hydroxyprogesterone,17-OHP ELISA Kit
PDT01036E	Mouse 17-ketosteroids,17-KS ELISA Kit
PDT01265E	Mouse 25-Dihydroxy vitamin D3,HVD3 ELISA Kit
PDT01706E	Mouse 50% complement hemolysis,CH50 ELISA Kit
PDT01530E	Mouse 5-Hydroxytryptamine,5HT ELISA Kit
PDT00194E	Mouse 5-Nucleotidase,5-NT ELISA Kit
PDT02549E	Mouse 6-keto-prostaglandin F1a,6-K-PGF1a ELISA Kit
PDT01274E	Mouse 6-keto-prostaglandin,6-K-PG ELISA Kit
PDT03264E	Mouse 8-Hydroxy-desoxyguanosine,8-OHdG ELISA Kit
PDT01882E	Mouse 8-iso prostaglandin,8-iso-PG ELISA Kit
PDT01955E	Mouse A Disintegrin And Metalloprotease 8,ADAM8 ELISA Kit
PDT03654E	Mouse A Disintegrin And Metalloprotease 9,ADAM9 ELISA Kit
PDT01538E	Mouse acetylcholine receptor antibody,AChRab ELISA Kit
PDT01220E	Mouse acetylcholine,ACH ELISA Kit
PDT04033E	mouse acetyl-CoA ELISA Kit
PDT03821E	Mouse Acid Phosphatase(ACP) ELISA Kit
PDT00922E	Mouse acidic fibroblast growth factor 1,aFGF-1 ELISA Kit
PDT00890E	Mouse Activated Leukocyte Cell Adhesion Molecule,ALCAM ELISA Kit
PDT03016E	Mouse activated protein C,APC ELISA Kit
PDT00016E	Mouse Activin A,ACV-A ELISA Kit
PDT00870E	Mouse adiponectin,ADP ELISA Kit
PDT00701E	mouse adrencocorticotropic hormone,ACTH ELISA Kit
PDT02448E	Mouse adrenergic alpha-1A receptor,ADRA1A ELISA Kit
PDT03160E	Mouse adrenomedullin,ADM ELISA Kit
PDT02541E	Mouse advanced glycation end products,AGEs ELISA Kit
PDT02600E	Mouse Alanine aminotransferase,ALT ELISA Kit
PDT01052E	Mouse aldosterone,ALD ELISA Kit
PDT03321E	Mouse alkaline phosphatase,ALP ELISA Kit
PDT04219E	Mouse Allantoin ELISA kit
PDT01447E	Mouse Alpha-fetoprotein,AFP ELISA Kit
PDT01872E	Mouse alpha-granular membrane protein,GMP-140 ELISA Kit
PDT01515E	Mouse alpha-L-fucosidase,AFU ELISA Kit
PDT02557E	Mouse Alternative macrophage activation-associated CC chemokine 1,AMAC-1 ELISA Kit
PDT01697E	Mouse Amylin ELISA Kit
PDT01465E	Mouse amyloid beta peptide 1-40,Aβ1-40 ELISA Kit
PDT03271E	Mouse amyloid beta peptide 1-42,Aβ1-42 ELISA Kit
PDT00520E	Mouse Androstenedione,ASD ELISA Kit
PDT00895E	Mouse Angiotensin,ANG ELISA Kit



Rabbit ELISA Kit

PDT00750E	Rabbit Interferon γ , IFN- γ ELISA Kit
PDT00723E	Rabbit Interleukin 1, IL-1 ELISA Kit
PDT00724E	Rabbit Interleukin 10, IL-10 ELISA Kit
PDT04105E	Rabbit Interleukin 13(IL-13) ELISA KIT
PDT01233E	Rabbit Interleukin 17, IL-17 ELISA Kit
PDT04240E	Rabbit Interleukin 1 α (IL-1 α) ELISA KIT
PDT00726E	Rabbit Interleukin 1 β , IL-1 β ELISA Kit
PDT01890E	Rabbit Interleukin 2, IL-2 ELISA Kit
PDT00727E	Rabbit Interleukin 3, IL-3 ELISA Kit
PDT00728E	Rabbit Interleukin 4, IL-4 ELISA Kit
PDT00729E	Rabbit Interleukin 6, IL-6 ELISA Kit
PDT00731E	Rabbit Interleukin 8, IL-8 ELISA Kit
PDT02984E	Rabbit Interleukin 9, IL-9 ELISA Kit
PDT00737E	Rabbit intestinal fatty acid binding protein, iFABP ELISA Kit
PDT04235E	Rabbit Keratan Sulfate(KS) ELISA KIT
PDT03361E	Rabbit Lactoferrin, LTF/LF ELISA kit
PDT01767E	Rabbit Laminin, LN ELISA Kit
PDT02965E	Rabbit Leptospira IgG ELISA Kit
PDT00795E	Rabbit Leptin, LEP ELISA Kit
PDT00733E	Rabbit leukemia inhibitory factor receptor, LIFR ELISA Kit
PDT00732E	Rabbit Leukotriene B4, LT-B4 ELISA Kit
PDT02921E	Rabbit lipoprotein α , Lp- α ELISA Kit
PDT01722E	Rabbit lipoprotein-associated phospholipase A2, Lp-PLA2 ELISA Kit
PDT03332E	Rabbit luteotropic hormone, LH ELISA Kit
PDT00839E	Rabbit lymphocyte function associated antigen 3, LFA-3 ELISA Kit
PDT03360E	Rabbit Lysozyme, LZM ELISA Kit
PDT00763E	Rabbit macrophage inflammatory protein 5, MIP-5 ELISA Kit
PDT00137E	Rabbit Macrophage Inflammatory Protein-1 α , MIP-1 α ELISA kit
PDT00851E	Rabbit major histocompatibility complex III, MHCIII/RLAIII ELISA Kit
PDT02355E	Rabbit major histocompatibility complex I, MHC I /RLA I ELISA Kit
PDT00718E	Rabbit major histocompatibility complex II, MHC II /RLA II ELISA Kit
PDT02867E	Rabbit matrix metalloproteinase 1, MMP-1 ELISA kit
PDT03256E	Rabbit matrix metalloproteinase 2/Gelatinase A, MMP-2 ELISA Kit
PDT02397E	Rabbit matrix metalloproteinase 3, MMP-3 ELISA kit
PDT00756E	Rabbit matrix metalloproteinase 4, MMP-4 ELISA Kit
PDT00754E	Rabbit matrix metalloproteinase 5, MMP-5 ELISA Kit
PDT00757E	Rabbit matrix metalloproteinase 9, MMP-9 ELISA Kit
PDT00786E	Rabbit myelin basic protein, MBP ELISA Kit
PDT00789E	Rabbit Nerve growth factor, NGF ELISA Kit
PDT00791E	Rabbit Neuron-specific enolase, NSE ELISA Kit
PDT00792E	Rabbit neurotrophin 3, NT-3 ELISA Kit



Fish ELISA Kit

PDT04106E	Fish 17-alpha Methyltestosterone (17- α MT) ELISA KIT
PDT04313E	Fish Calcineurin (CAN) ELISA KIT
PDT04142E	Fish Cholecystokinin(CCK) ELISA KIT
PDT04318E	Fish Collagen Type IV(COL (16)) ELISA KIT
PDT01646E	Fish Cortisol ELISA Kit
PDT04018E	Fish Cortisol ELISA Kit
PDT03910E	Fish cytosolic phospholipase A2A,cPLA2A ELISA Kit
PDT04320E	Fish Endotoxin(ET) ELISA KIT
PDT04109E	Fish Estradiol (E2) ELISA KIT
PDT01948E	Fish gonadotropin-releasing hormone,GnRH ELISA Kit
PDT03745E	Fish growth hormone,GH ELISA Kit
PDT00682E	Fish high sensitivity C-Reactive Protein,hs-CRP ELISA Kit
PDT04319E	Fish Hyaluronic Acid(HA) ELISA KIT
PDT03702E	Fish immunoglobulin M ELISA kit
PDT03735E	Fish Insulin Receptor,ISR ELISA KIT
PDT03747E	Fish Insulin,INS ELISA Kit
PDT03746E	Fish Insulin-like growth factors 1,IGF-1 ELISA Kit
PDT03981E	Fish Interferon γ ,IFN- γ ELISA Kit
PDT02850E	Fish Interleukin 1 α ,IL-1 α ELISA kit
PDT04323E	Fish Interleukin 1 α (IL-1 α) ELISA KIT
PDT04322E	Fish Interleukin 1 β (IL- 1 β) ELISA KIT
PDT02849E	Fish Interleukin 1 β ,IL-1 β ELISA Kit
PDT04321E	Fish Interleukin 6(IL-6) ELISA KIT
PDT03980E	Fish Interleukin-8,IL-8 ELISA Kit
PDT04053E	Fish Leukotriene B4,LT-B4 ELISA Kit
PDT03334E	Fish major histocompatibility complex,MHC ELISA Kit
PDT00550E	Fish Osteocalcin/Bone gla protein,OT/BGP ELISA kit
PDT03464E	Fish phosvitin,PV ELISA Kit
PDT03823E	Fish prolactin,PRL ELISA Kit
PDT03701E	Fish Prostaglandin E2,PG-E2 ELISA Kit
PDT01648E	Fish Thyroxine,T4 ELISA Kit
PDT04019E	Fish Tri-iodothyronine(T3) Elisa kit
PDT01647E	Fish Tri-iodothyronine,T3 ELISA Kit
PDT04317E	Fish Tumor Necrosis Factor α (TNF- α) ELISA KIT



Plant ELISA Kit

PDT00852E	Plant 25-Dihydroxy vitamin D3,HVD3 ELISA Kit
PDT03916E	Plant Ascorbate Peroxidase(APX) ELISA kit
PDT02363E	Plant calmodulin,CAM ELISA Kit
PDT03917E	Plant Catalase (CAT) ELISA kit
PDT03013E	Plant Gibberellic Acid,GA ELISA Kit
PDT04282E	Plant hemagglutinin ELISA kit
PDT02289E	Plant hormone abscisic acid,ABA ELISA Kit
PDT00850E	Plant Human Vitamin C,VC ELISA Kit
PDT03354E	Plant phosphatidic acid,PA ELISA Kit
PDT03353E	Plant phosphatidylglycerol,PG ELISA Kit
PDT03915E	Plant Reactive OXygen Species(ROS) ELISA kit
PDT03879E	Plant Sucrose Phosphate Synthase (SPS) ELISA Kit
PDT03918E	Plant super oxide dismutase (SOD) ELISA kit
PDT00860E	Plant Vitamin A,VA ELISA Kit
PDT00861E	Plant Vitamin B12,VB12 ELISA Kit
PDT00853E	Plant Vitamin B6,VB6 ELISA Kit
PDT00854E	Plant Vitamin D,VD ELISA Kit
PDT00858E	Plant Vitamin D2,VD2 ELISA Kit
PDT00857E	Plant Vitamin D3,VD3 ELISA kit
PDT00859E	Plant Vitamin E,VE EELISA Kit
PDT03014E	Plant zeatin riboside,ZR ELISA Kit





Chicken ELISA Kit

PDT00771E	Chicken Heat Shock Protein 20,HSP-20	ELISA Kit
PDT03982E	Chicken Heat Shock Protein 27,HSP-27	ELISA Kit
PDT00776E	Chicken Heat Shock Protein 40,HSP-40	ELISA Kit
PDT00683E	Chicken Heat Shock Protein 60,HSP-60	ELISA Kit
PDT03326E	Chicken Heat Shock Protein 70,Hsp-70	ELISA Kit
PDT03983E	Chicken Heat Shock Protein 72,HSP-72	ELISA Kit
PDT03976E	Chicken Heat Shock Protein 90,HSP-90	ELISA Kit
PDT01978E	Chicken heparan sulfate,HS ELISA Kit	
PDT00364E	Chicken Herpes simplexvirus II antibody,HSV II -Ab ELISA Kit	
PDT03985E	Chicken Hsp27 IgG antibody ELISA kit	
PDT03986E	Chicken Hsp27 IgM antibody ELISA kit	
PDT03988E	Chicken Hsp60 IgG antibody ELISA kit	
PDT03987E	Chicken Hsp60 IgM antibody ELISA kit	
PDT03989E	Chicken Hsp72 IgG antibody ELISA kit	
PDT03990E	Chicken Hsp72 IgM antibody ELISA kit	
PDT03991E	Chicken Hsp90 IgG antibody ELISA kit	
PDT03992E	Chicken Hsp90 IgM antibody ELISA kit	
PDT03993E	Chicken Hsp90 IgM antibody ELISA kit	
PDT02375E	Chicken Hyaluronic acid,HA ELISA Kit	
PDT00331E	Chicken Immune RNA,Irna ELISA Kit	
PDT03357E	Chicken Immunoglobulin A,IgA ELISA Kit	
PDT03359E	Chicken Immunoglobulin E,IgE ELISA Kit	
PDT02977E	Chicken Immunoglobulin G,IgG ELISA Kit	
PDT02875E	Chicken infectious coryza,ic ELISA Kit	
PDT04028E	Chicken inositol 1,4,5,-trisphosphate(IP3) ELISA kit	
PDT02972E	Chicken Insulin-like growth factors 1,IGF-1 ELISA Kit	
PDT03169E	Chicken Interferon α ,IFN- α ELISA Kit	
PDT03362E	Chicken Interferon β ,IFN- β /IFNB ELISA Kit	
PDT01709E	Chicken Interferon γ ,IFN- γ ELISA Kit	
PDT03167E	Chicken Interleukin 1,IL-1 ELISA Kit	
PDT03956E	Chicken Interleukin 10,IL-10 ELISA Kit	
PDT03957E	Chicken Interleukin 12,IL-12 ELISA Kit	
PDT04121E	Chicken Interleukin 15(IL-15) ELISA KIT	
PDT00119E	Chicken Interleukin 17,IL-17 ELISA Kit	
PDT03168E	Chicken Interleukin 18,IL-18 ELISA KIT	
PDT03355E	Chicken Interleukin 1 β ,IL-1 β ELISA Kit	
PDT00594E	Chicken Interleukin 2,IL-2 ELISA Kit	
PDT02982E	Chicken Interleukin 3,IL-3 ELISA Kit	
PDT00595E	Chicken Interleukin 4,IL-4 ELISA Kit	
PDT04120E	Chicken Interleukin 6 Receptor (IL-6R) ELISA KIT	
PDT01708E	Chicken Interleukin 6,IL-6 ELISA Kit	
PDT02983E	Chicken Interleukin 9,IL-9 ELISA Kit	
PDT00306E	Chicken Japanese Encephalitis IgG,JE IgG ELISA Kit	



Porcine ELISA Kit

PDT04271E	Porcine 17-Hydroxyprogesterone(17-OHP) ELISA KIT
PDT01541E	Porcine acetylcholine receptor antibody,AChRab ELISA Kit
PDT00849E	Porcine acetylcholine,ACH ELISA Kit
PDT03788E	Porcine activated protein C(APC) ELISA Kit
PDT00667E	Porcine adiponectin,ADP ELISA Kit
PDT04041E	Porcine adrencocorticotropic hormone,ACTH ELISA Kit
PDT01617E	Porcine Angiopoietin 1,ANG-1 ELISA Kit
PDT01619E	Porcine Angiopoietin 2,ANG-2 ELISA Kit
PDT02497E	Porcine angiotension II,ANG-II ELISA Kit
PDT03889E	Porcine Antibody against Foot and Mouth Disease(FMDV) IgG ELISA kit
PDT03890E	Porcine Antibody against Foot and Mouth Disease(FMDV) IgM ELISA kit
PDT00692E	Porcine anti-thrombin receptor,ATR ELISA Kit
PDT00663E	Porcine apoprotein A1,apo-A1 ELISA Kit
PDT00665E	Porcine apoprotein B100,apo-B100 ELISA Kit
PDT03962E	Porcine basic fibroblast growth factor,bFGF ELISA Kit
PDT02495E	Porcine B-cell leukemia/lymphoma 2,Bcl-2 ELISA Kit
PDT02494E	Porcine Bcl-2 Assciated X protein,BAX ELISA Kit
PDT00644E	Porcine brain natriuretic peptide,BNP ELISA Kit
PDT03907E	Porcine calmodulin,CAM ELISA Kit
PDT00627E	Porcine Carboxyterminal propeptide of type I procollagen,P I CP ELISA Kit
PDT03317E	Porcine cardiac troponin I ,cTn- I ELISA Kit
PDT03225E	Porcine cholecystokinin,CCK ELISA Kit
PDT00614E	Porcine Collagen Type III,Col III ELISA Kit
PDT00745E	Porcine Complement 3,C3 ELISA Kit
PDT03796E	Porcine Complement 4,C4 ELISA Kit
PDT00646E	Porcine Corticosterone,CORT ELISA Kit
PDT00645E	Porcine Cortisol ELISA Kit
PDT01328E	Porcine C-reactive protein,CRP ELISA Kit
PDT03709E	Porcine Cytochrome P450 Side Chain Cleavage Enzyme(P450scc) ELISA kit
PDT02526E	Porcine D-Dimer,D2D ELISA Kit
PDT02559E	Porcine Dexamethasone,Dex ELISA Kit
PDT03226E	Porcine diamine oxidase,DAO ELISA Kit
PDT04275E	Porcine Dihydrotestosterone(DHT) ELISA KIT
PDT01729E	Porcine Endothelial nitric oxide synthase 3,eNOS-3 ELISA Kit
PDT01733E	Porcine Endothelial nitric oxide synthase,eNOS ELISA Kit
PDT00643E	Porcine endothelin 1,ET-1 ELISA Kit
PDT03444E	Porcine epidemic diarrhea virus antibody,PEDV ELISA Kit
PDT00736E	Porcine Epinephrine/Adrenaline,EPI ELISA Kit
PDT00626E	Porcine Epithelial growth factor,EGF ELISA Kit
PDT03705E	Porcine Erythropoietin,EPO ELISA Kit
PDT03651E	Porcine E-Selectin ELISA kit
PDT00815E	Porcine Estradiol receptor,ER ELISA Kit
PDT00672E	Porcine Estradiol,E2 ELISA KIT

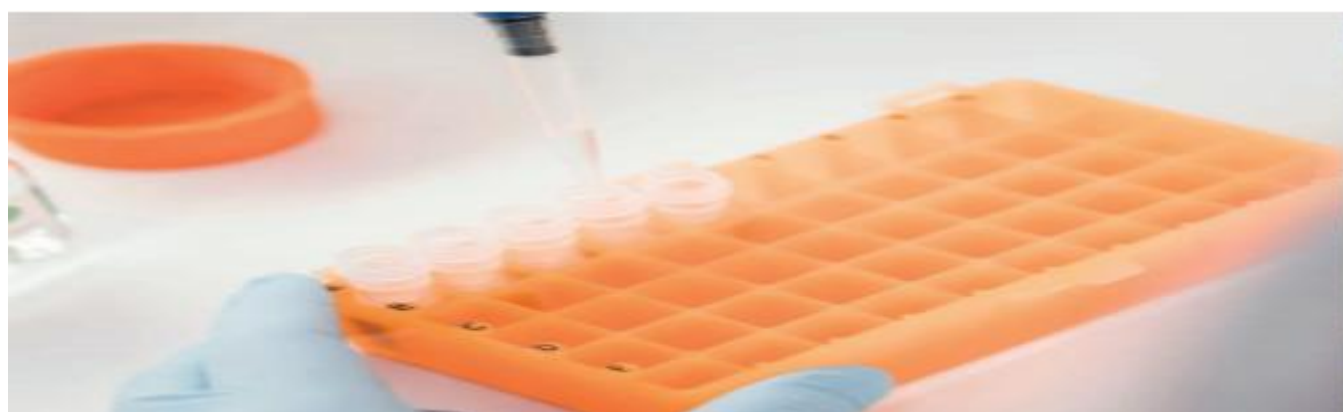


Guinea Pig ELISA Kit

PDT04122E	Guinea Interleukin 18 (IL-18) ELISA KIT
PDT00666E	Guinea pig 50% complement hemolysis,CH50 ELISA Kit
PDT00382E	Guinea pig advanced glycation end products,AGEs ELISA Kit
PDT00785E	Guinea pig calcitonin gene related peptide,CGRP ELISA Kit
PDT03908E	Guinea pig calmodulin,CAM ELISA Kit
PDT03717E	Guinea pig cyclic adenosine monophosphate,cAMP ELISA Kit
PDT03718E	Guinea pig Cyclic guanosine monophosphate,cGMP ELISA Kit
PDT01734E	Guinea pig Endothelial nitric oxide synthase,eNOS ELISA Kit
PDT00608E	Guinea pig Endothelin 1,ET-1 ELISA Kit
PDT03714E	Guinea pig eosinophil cationic protein ,ECP ELISA Kit
PDT00598E	Guinea pig Epidermal growth factor,EGF ELISA Kit
PDT04051E	Guinea pig estrogen Elisa kit
PDT00600E	Guinea pig follicle-stimulating hormone,FSH ELISA Kit
PDT00609E	Guinea pig Growth hormone,GH ELISA Kit
PDT00603E	Guinea pig hepatocyte growth factor,HGF ELISA Kit
PDT00613E	Guinea pig Histamine,HIS ELISA Kit
PDT03728E	Guinea pig IgE ELISA kit
PDT00606E	Guinea pig Immunoglobulin A,IgA ELISA Kit
PDT00607E	Guinea pig Immunoglobulin E,IgE ELISA Kit
PDT03219E	Guinea pig Immunoglobulin G,IgG ELISA Kit
PDT00602E	Guinea pig Interferon γ ,IFN- γ ELISA Kit
PDT00350E	Guinea pig Interleukin 1 receptor antagonist, IL-1ra ELISA kit
PDT04014E	Guinea pig interleukin 10,IL-10 ELISA Kit
PDT04015E	Guinea pig interleukin 13,IL-13 ELISA Kit
PDT04185E	Guinea pig Interleukin 17(IL-17) ELISA KIT
PDT04013E	Guinea pig interleukin 2,IL-2 ELISA Kit
PDT04186E	Guinea pig Interleukin 22(IL-22) ELISA KIT
PDT03220E	Guinea pig interleukin 4,IL-4 ELISA Kit
PDT03713E	Guinea pig interleukin 5,IL-5 ELISA Kit
PDT00596E	Guinea pig Interleukin 6,IL-6 ELISA Kit
PDT04184E	Guinea pig Interleukin 8(IL-8) ELISA KIT
PDT02036E	Guinea pig Interleukin-12,IL-12/P70 ELISA KIT
PDT00599E	Guinea pig intestinal fatty acid binding protein,iFABP ELISA Kit
PDT03719E	Guinea pig KL-6 (Krebs von den Lundgen-6) ELISA Kit
PDT02964E	Guinea pig Lebtospira IgG ELISA Kit
PDT00597E	Guinea pig Leukotriene B4,LT-B4 ELISA Kit
PDT02890E	Guinea pig leukotriene D4,LT-D4 ELISA Kit
PDT00404E	Guinea pig lipid peroxlde,LPO ELISA Kit
PDT03716E	Guinea pig Macrophage Colony Stimulating Factors,M-CSF ELISA kit
PDT02356E	Guinea pig major histocompatibility complex,MHC/GPLA ELISA Kit
PDT00604E	Guinea pig matrix metalloproteinase 9,MMP-9 ELISA Kit

Sheep ELISA Kit

PDT04272E	Sheep 17-Hydroxyprogesterone(17-OHP) ELISA KIT
PDT00362E	Sheep Complement fragment 3b rccptor,C3bR ELISA Kit
PDT04276E	Sheep Dihydrotestosterone(DHT) ELISA KIT
PDT04257E	Sheep Estradiol Receptor Alpha(ER-ALPHA) ELISA KIT
PDT04256E	Sheep Estradiol(E2) ELISA KIT
PDT04254E	Sheep Follicle Stimulating Hormone (FSH) ELISA KIT
PDT02956E	Sheep Interleukin 1,IL-1 ELISA Kit
PDT03938E	Sheep Interleukin 10,IL-10 ELISA Kit
PDT03209E	Sheep Interleukin 1 β ,IL-1 β ELISA Kit
PDT03343E	Sheep Interleukin 2,IL-2 ELISA Kit
PDT03210E	Sheep Interleukin 6,IL-6 ELISA Kit
PDT00355E	Sheep Interleukin-2 receptor,IL-2R ELISA kit
PDT04286E	Sheep Interleukin-8(IL-8) ELISA KIT
PDT04247E	Sheep Luteotropic Hormone(LH) ELISA KIT
PDT03336E	Sheep major histocompatibility complex,MHC ELISA Kit
PDT04299E	Sheep Oxytocin(OT) ELISA KIT
PDT04260E	Sheep Progesterone(PROG) ELISA KIT
PDT04255E	Sheep Testosterone ELISA kit





Monkey ELISA Kit

PDT00862E	Monkey acetylcholine receptor antibody,AChRab ELISA Kit
PDT02950E	Monkey adrenomedullin,ADM ELISA Kit
PDT00383E	Monkey anti-liver cell membrane antibody,LMA ELISA Kit
PDT03277E	Monkey apoprotein A1,apo-A1 ELISA Kit
PDT03278E	Monkey apoprotein B100,apo-B100 ELISA Kit
PDT03414E	Monkey B virus Infections ELISA Kit
PDT02525E	Monkey brain natriuretic peptide,BNP ELISA Kit
PDT04066E	Monkey Catalase (CAT) ELISA KIT
PDT02561E	Monkey Collagenase I ELISA Kit
PDT04068E	Monkey Endothelial Nitric Oxide Synthase(ENOS) ELISA KIT
PDT00561E	Monkey Endothelin 1,ET-1 ELISA Kit
PDT00678E	Monkey endotoxin,ET ELISA Kit
PDT03140E	Monkey E-Selectin ELISA kit
PDT00693E	Monkey follicle-stimulating hormone,FSH ELISA Kit
PDT00129E	Monkey glial fibrillary acidic protein,GFAP ELISA Kit
PDT04069E	Monkey Glutathione Peroxidase (GSH-PX) ELISA KIT
PDT04071E	Monkey Glutathione Reductase (GR) ELISA KIT
PDT04070E	Monkey Glutathione S-transferases(GSTS) ELISA KIT
PDT00685E	Monkey Heat Shock Protein glycoprotein 96,HSP gp96 ELISA Kit
PDT03137E	Monkey high sensitivity C-Reactive Protein,hs-CRP ELISA Kit
PDT04072E	Monkey Inducible Nitric Oxide Synthase(INOS) ELISA KIT
PDT03149E	Monkey Insulin,INS ELISA Kit
PDT03142E	Monkey Interferon α ,IFN- α ELISA Kit
PDT03151E	Monkey Interferon γ ,IFN- γ ELISA Kit
PDT03143E	Monkey Interleukin 1,IL-1 ELISA Kit
PDT03152E	Monkey Interleukin 6,IL-6 ELISA Kit
PDT02953E	Monkey Interleukin-2 receptor,IL-2R ELISA kit
PDT01226E	Monkey Interleukin-8,IL-8 ELISA Kit
PDT01768E	Monkey Laminin,LN ELISA Kit
PDT01914E	Monkey Leukotriene C4,LT-C4 ELISA Kit
PDT00136E	Monkey Macrophage Inflammatory Protein-1 α ,MIP-1 α ELISA kit
PDT03148E	Monkey Macrophage Migration Inhibitory Factor,MIF ELISA Kit
PDT00351E	Monkey matrix metalloproteinase 11,MMP11 ELISA Kit
PDT03147E	factor,MCP1/MCAF ELISA kit
PDT04073E	Monkey Neuronal Nitric Oxide Synthase (NNOS). ELISA KIT
PDT01070E	Monkey Platelet Factor 4,PF-4 ELISA Kit
PDT03138E	Monkey Soluble Intercellular Adhesion Molecule-1,sICAM-1 ELISA Kit
PDT03139E	Monkey soluble Vasculuar cell adhesion molecule 1,sVCAM-1 ELISA Kit
PDT04065E	Monkey Super Oxide Dismutase (SOD) ELISA KIT
PDT03141E	Monkey Tumor necrosis factor α ,TNF- α ELISA KIT



Goat ELISA Kit

PDT02944E	Goat acetone ELISA Kit
PDT04078E	Goat Alpha-granular Membrane Protein(GMP-140) ELISA KIT
PDT03936E	Goat basic fibroblast growth factor,bFGF ELISA Kit
PDT04168E	Goat Bone Alkaline Phosphatase (BALP) ELISA KIT
PDT04226E	Goat Catalase (CAT) ELISA KIT
PDT03630E	Goat cluster Of differentiation,CD14 ELISA Kit
PDT04294E	Goat C-reactive Protein(CRP) ELISA KIT
PDT04167E	Goat C-telopeptide Of Type I Collagen(CTX-(13)) ELISA KIT
PDT04302E	Goat Estrogen(E) ELISA KIT
PDT04227E	Goat Glutathione Peroxidase (GSH-PX) ELISA KIT
PDT00747E	Goat Growth Hormone Releasing Peptide,GHRP ELISA Kit
PDT04293E	Goat Haptoglobin(HPT/HP) ELISA KIT
PDT04223E	Goat Immunoglobulin A(IGA) ELISA KIT
PDT03857E	Goat Immunoglobulin G,IgG ELISA Kit
PDT04222E	Goat Immunoglobulin M(IGM) ELISA KIT
PDT04061E	Goat Interferon γ ,IFN- γ ELISA Kit
PDT02923E	Goat Interleukin 10,IL-10 ELISA Kit
PDT03729E	Goat interleukin 12,IL-12/P40 ELISA KIT
PDT04060E	Goat Interleukin 2(IL-2) ELISA Kit
PDT02922E	Goat Interleukin 4,IL-4 ELISA Kit
PDT02951E	Goat Interleukin-2 receptor,IL-2R ELISA kit
PDT03955E	Goat Leptin,LEP ELISA kit
PDT04153E	Goat Lipopolysaccharides (LPS) ELISA KIT
PDT03366E	Goat lymphocyte factor ELISA Kit
PDT03337E	Goat major histocompatibility complex,MHC/OLA ELISA Kit
PDT04224E	Goat Malondialdehyde(MDA) ELISA KIT
PDT04170E	Goat Parathyroid Hormone (PTH) ELISA KIT
PDT03934E	Goat Platelet-Derived Growth Factor-BB,PDGF-BB ELISA kit
PDT04228E	Goat Reduced Glutathione(GSH) ELISA KIT
PDT04295E	Goat Serum Amyloid A(SAA) ELISA KIT
PDT04225E	Goat Super Oxide Dismutase (SOD) ELISA KIT
PDT03730E	Goat Transforming Growth factor β 1,TGF- β 1 ELISA kit
PDT03731E	Goat Transforming Growth factor β 2,TGF- β 2 ELISA kit
PDT02925E	Goat Tumor necrosis factor α ,TNF- α ELISA KIT
PDT03935E	Goat Vascular Endothelial cell Growth Factor,VEGF ELISA Kit



Canine ELISA Kit

PDT04269E	Canine 17-Hydroxyprogesterone(17-OHP) ELISA KIT
PDT03184E	Canine 2,3-Disphosphoglycerate,2,3-DPG ELISA Kit
PDT01531E	Canine 5-Hydroxytryptamine,5HT ELISA Kit
PDT01540E	Canine acetylcholine receptor antibody,AChRab ELISA Kit
PDT02948E	Canine adrenomedullin,ADM ELISA Kit
PDT04050E	Canine aldosterone,ALD ELISA Kit
PDT03933E	Canine alkaline phosphatase,ALP ELISA Kit
PDT00662E	Canine Beta-Endorphin, β -EP ELISA Kit
PDT03932E	Canine bone morphogenetic protein 1,BMP-1 ELISA Kit
PDT04055E	Canine carcinoembryonic antigen,CEA ELISA Kit
PDT03319E	Canine cluster of differentiation 6,CD6 ELISA Kit
PDT03320E	Canine cluster of differentiation 8,CD8 ELISA Kit
PDT03882E	Canine Corticosterone,CORT ELISA Kit
PDT03885E	Canine corticotropin releasing hormone,CRH ELISA Kit
PDT03505E	Canine cyclooxygenase-2,COX-2 ELISA Kit
PDT04158E	Canine Cystatin C(CYS-C) ELISA KIT
PDT03404E	Canine desmin,Des ELISA Kit
PDT01068E	Canine Dihydrotestosterone,DHT ELISA Kit
PDT00764E	Canine Endothelial nitric oxide synthase,eNOS ELISA Kit
PDT00824E	Canine Endothelin 1,ET-1 ELISA Kit
PDT03883E	Canine Epinephrine/Adrenaline,EPI ELISA Kit
PDT03420E	Canine Erythropoietin,EPO ELISA Kit
PDT00674E	Canine Estradiol,E2 ELISA Kit
PDT00880E	Canine estrogen,E ELISA Kit
PDT01899E	Canine Folic acid,FA ELISA Kit
PDT00695E	Canine follicle-stimulating hormone,FSH ELISA Kit
PDT04280E	Canine Free Thyroxine(FT4) ELISA KIT
PDT04279E	Canine Free Tri-iodothyronine Indes(FREE-T3) ELISA KIT
PDT01535E	Canine Gamma-aminobutyric acid,GABA ELISA Kit
PDT03499E	Canine Granulocyte-Macrophage Colony Stimulating Factor,GM-CSF ELISA Kit
PDT00395E	Canine heparin cofactor II,HCII ELISA Kit
PDT03185E	Canine hepatitis B virus surface antigen,HBsAg ELISA Kit
PDT02398E	Canine Histamine,HIS ELISA Kit
PDT02399E	Canine Immunoglobulin E,IgE ELISA Kit
PDT04311E	Canine Immunoglobulin G(IGG) ELISA KIT
PDT00831E	Canine Insulin Receptor β ,ISR- β ELISA KIT



Bovine ELISA Kit

PDT04035E	Bovine Coenzyme A ELISA Kit
PDT04152E	Bovine Cortisol ELISA Kit
PDT01736E	Bovine C-reactive protein,CRP ELISA Kit
PDT04273E	Bovine Dihydrotestosterone(DHT) ELISA KIT
PDT00734E	Bovine Epinephrine/Adrenaline,EPI ELISA Kit
PDT01338E	Bovine Estradiol,E2 ELISA Kit
PDT04162E	Bovine Folic Acid(FA) ELISA KIT
PDT03750E	Bovine glucagon-like peptide-1,GLP-1 ELISA Kit
PDT02939E	Bovine Glucose-6-Phosphate Dehydrogenase,G6PD ELISA Kit
PDT01332E	Bovine Growth Hormone Releasing Peptide,GHRP ELISA Kit
PDT01744E	Bovine Haptoglobin,Hpt/HP ELISA KIT
PDT03756E	Bovine HMG-CoA ELISA kit
PDT03762E	Bovine HMG-CoA synthetase ELISA kit
PDT03781E	Bovine hydroxyacyl-Coenzyme A dehydrogenase ELISA kit
PDT04203E	Bovine Idian Hedgehog (IHH) ELISA KIT
PDT04118E	Bovine IgE ELISA Kit
PDT03692E	Bovine Immunoglobulin A,IgA ELISA Kit
PDT03690E	Bovine Immunoglobulin G,IgG ELISA Kit
PDT03691E	Bovine Immunoglobulin M,IgM ELISA Kit
PDT03670E	Bovine Insulin ELISA kit
PDT02026E	Bovine Insulin-like growth factor 1,IGF-1 ELISA Kit
PDT04132E	Bovine Insulin-like Growth Factor Binding Protein 2(IGFBP-2) ELISA KIT
PDT03902E	bovine Insulin-like growth factor binding protein 3,IGFBP-3 ELISA kit
PDT04330E	Bovine Insulin-like Growth Factor Binding Protein 5(IGFBP-5) ELISA KIT
PDT02926E	Bovine Interferon γ ,IFN- γ ELISA Kit
PDT03693E	Bovine Interleukin 1,IL-1 ELISA Kit
PDT04016E	Bovine Interleukin 10,IL-10 ELISA Kit
PDT04079E	Bovine Interleukin 1 β (IL- 1 β) ELISA KIT
PDT02924E	Bovine Interleukin 2,IL-2 ELISA Kit
PDT03997E	Bovine interleukin 4,IL-4 ELISA Kit
PDT03996E	Bovine Interleukin 5 (IL-5) ELISA kit
PDT03998E	Bovine Interleukin 6,IL-6 ELISA Kit
PDT04140E	Bovine Interleukin 8(IL-8) ELISA KIT
PDT02952E	Bovine Interleukin-2 receptor,IL-2R ELISA kit
PDT00359E	Bovine intestinal alkaline phosphatase,CIAP ELISA Kit
PDT03409E	Bovine Lactoferrin,LTF/LF ELISA kit



ELISA Kit for Food Safety & Drug Residues & Water Quality

PDT04335E	Ractopamine ELISA kit
PDT04336E	Sulfamethoxydiazine ELISA kit
PDT04337E	Sudan red ELISA kit
PDT04338E	Ciprofloxacin ELISA kit
PDT04339E	Enrofloxacin ELISA kit
PDT04340E	Aminohydantoin hydrochloride (AHD) ELISA kit
PDT04341E	Diethylstilbestrol ELISA kit
PDT04342E	Diazepam ELISA kit
PDT04343E	Sulfaquinoxaline ELISA kit
PDT04344E	Sulphadimidine ELISA kit
PDT04345E	Semicarbazidehydro chloride(AMOZ) ELISA kit
PDT04346E	Furazolidone(AOZ) ELISA kit
PDT04347E	Chloramphenicol ELISA kit
PDT04348E	Fluoroquinolones ELISA kit
PDT04349E	Ciprofloxacin ELISA kit
PDT04350E	Paranitroaniline red ELISA kit
PDT04351E	Nitrofurazone(SEM) ELISA kit
PDT04352E	Salbutamol ELISA kit
PDT04353E	Clenbuterol ELISA kit
PDT04354E	Melamine ELISA Kit
PDT04355E	Tylosin (TYL) ELISA kit
PDT04356E	Florfenicol (FF) ELISA kit
PDT04357E	Penicillin G(benzyl penicillin) ELISA kit
PDT04358E	Sulfonamides (SAs) residue ELISA kit
PDT04359E	Chlopyrifos (Dursban) ELISA kit
PDT04360E	Organophosphorus pesticide residue ELISA kit
PDT04361E	Tetracycline (TET) ELISA kti
PDT04362E	Ampicillin (AMP) ELISA kit
PDT04363E	Gentamicin (GEN) ELISA kit
PDT04364E	Streptomycin (SM) ELISA kit
PDT04365E	Quinolones ELISA kit
PDT04366E	Sulfadimethoxine (SDM) ELISA kit



Antibody

Monoclonal Antibody

PD-00001mA	Antibody to Human Ferritin (FE)	Human
PD-00002mA	Antibody to Rat Ferritin (FE)	Rat
PD-00003mA	Antibody to Human Thyroglobulin (TG)	Human
PD-00004mA	Antibody to Rat Thyroglobulin (TG)	Rat
PD-00005mA	Antibody to Human High Density Lipoprotein (HDL)	Human
PD-00006mA	Antibody to Rat High Density Lipoprotein (HDL)	Rat
PD-00007mA	Antibody to Human Low Density Lipoprotein (LDL)	Human
PD-00008mA	Antibody to Rat Low Density Lipoprotein (LDL)	Rat
PD-00009mA	Antibody to Human C Reactive Protein (CRP)	Human
PD-00010mA	Antibody to Rat C Reactive Protein (CRP)	Rat
PD-00011mA	Antibody to Human C Reactive Protein (CRP)	Human
PD-00012mA	Antibody to Rat C Reactive Protein (CRP)	Rat
PD-00013mA	Antibody to Human Chorionic Gonadotropin (CG)	Human
PD-00014mA	Antibody to Human Apotransferrin (APOTf)	Human
PD-00015mA	Antibody to Human Fibronectin (FN)	Human
PD-00016mA	Antibody to Rat Fibronectin (FN)	Rat
PD-00017mA	Antibody to Human Laminin (LN)	Human
PD-00018mA	Antibody to Rat Laminin (LN)	Rat
PD-00019mA	Antibody to Human Mucin 21 (MUC21)	Human
PD-00020mA	Antibody to Human Mucin 20 (MUC20)	Human
PD-00021mA	Antibody to Rat Mucin 20 (MUC20)	Rat
PD-00022mA	Antibody to Bovine Mucin 20 (MUC20)	Cattle
PD-00023mA	Antibody to Human Mucin 17 (MUC17)	Human
PD-00024mA	Antibody to Bovine Mucin 17 (MUC17)	Cattle
PD-00025mA	Antibody to Human Mucin 7, Secreted (MUC7)	Human
PD-00026mA	Antibody to Bovine Mucin 7, Secreted (MUC7)	Cattle
PD-00027mA	Antibody to Human Mucin 6 (MUC6)	Human
PD-00028mA	Antibody to Bovine Mucin 6 (MUC6)	Cattle
PD-00029mA	Antibody to Human Mucin 5 Subtype B (MUC5B)	Human
PD-00030mA	Antibody to Bovine Mucin 5 Subtype B (MUC5B)	Cattle
PD-00031mA	Antibody to Human Mucin 5 Subtype AC (MUC5AC)	Human
PD-00032mA	Antibody to Rat Mucin 5 Subtype AC (MUC5AC)	Rat
PD-00033mA	Antibody to Bovine Mucin 5 Subtype AC (MUC5AC)	Cattle
PD-00034mA	Antibody to Human Mucin 4 (MUC4)	Human
PD-00035mA	Antibody to Rat Mucin 4 (MUC4)	Rat
PD-00036mA	Antibody to Bovine Mucin 4 (MUC4)	Cattle
PD-00037mA	Antibody to Human Mucin 3 (MUC3)	Human
PD-00038mA	Antibody to Rat Mucin 3 (MUC3)	Rat
PD-00039mA	Antibody to Bovine Mucin 3 (MUC3)	Cattle
PD-00040mA	Antibody to Human Mucin 2 (MUC2)	Human
PD-00041mA	Antibody to Rat Mucin 2 (MUC2)	Rat
PD-00042mA	Antibody to Bovine Mucin 2 (MUC2)	Cattle
PD-00043mA	Antibody to Human Mucin 1 (MUC1)	Human
PD-00044mA	Antibody to Rat Mucin 1 (MUC1)	Rat
PD-00045mA	Antibody to Bovine Mucin 1 (MUC1)	Cattle
PD-00046mA	Antibody to Human Antitrypsin, Alpha 1 (a1AT)	Human



PD-00048mA	Antibody to Human Haptoglobin (Hpt)	Human
PD-00049mA	Antibody to Rat Haptoglobin (Hpt)	Rat
PD-00050mA	Antibody to Guinea Pig Haptoglobin (Hpt)	Guinea Pig
PD-00051mA	Antibody to Rabbit Haptoglobin (Hpt)	Rabbit
PD-00052mA	Antibody to Human Plasminogen (Plg)	Human
PD-00053mA	Antibody to Rat Plasminogen (Plg)	Rat
PD-00054mA	Antibody to Human Macroglobulin, Alpha 2 (a2MG)	Human
PD-00055mA	Antibody to Rat Macroglobulin, Alpha 2 (a2MG)	Rat
PD-00056mA	Antibody to Human Lactoferrin (LTF)	Human
PD-00057mA	Antibody to Rat Lactoferrin (LTF)	Rat
PD-00058mA	Antibody to Human Glucokinase (GCK)	Human
PD-00059mA	Antibody to Rat Glucokinase (GCK)	Rat
PD-00060mA	Antibody to Human Arginase (Arg)	Human
PD-00061mA	Antibody to Rat Arginase (Arg)	Rat
PD-00062mA	Antibody to Human Prolactin (PRL)	Human
PD-00063mA	Antibody to Rat Prolactin (PRL)	Rat
PD-00064mA	Antibody to Human Mitogen Activated Protein Kinase 10 (MAPK10)	Human
PD-00065mA	Antibody to Rat Mitogen Activated Protein Kinase 10 (MAPK10)	Rat
PD-00066mA	Antibody to Human Hemopexin (HPX)	Human
PD-00067mA	Antibody to Rat Hemopexin (HPX)	Rat
PD-00068mA	Antibody to Human Hemopexin (HPX)	Human
PD-00069mA	Antibody to Rat Hemopexin (HPX)	Rat
PD-00070mA	Antibody to Human Von Willebrand Factor (vWF)	Human
PD-00071mA	Antibody to Rat Von Willebrand Factor (vWF)	Rat
PD-00072mA	Antibody to Human Apolipoprotein B100 (APOB100)	Human
PD-00073mA	Antibody to Rat Apolipoprotein B100 (APOB100)	Rat
PD-00074mA	Antibody to Human Apolipoprotein B (APOB)	Human
PD-00075mA	Antibody to Rat Apolipoprotein B (APOB)	Rat
PD-00076mA	Antibody to Human Apolipoprotein E (APOE)	Human
PD-00077mA	Antibody to Rat Apolipoprotein E (APOE)	Rat
PD-00078mA	Antibody to Human Apolipoprotein A1 (APOA1)	Human
PD-00079mA	Antibody to Rat Apolipoprotein A1 (APOA1)	Rat
PD-00080mA	Antibody to Human Interferon, Alpha (IFNa)	Human
PD-00081mA	Antibody to Rat Interferon, Alpha (IFNa)	Rat
PD-00082mA	Antibody to Human Pim 1 Oncogene (PIM1)	Human
PD-00083mA	Antibody to Rat Pim 1 Oncogene (PIM1)	Rat
PD-00084mA	Antibody to Human Thyroxine Binding Globulin (TBG)	Human
PD-00085mA	Antibody to Rat Thyroxine Binding Globulin (TBG)	Rat



Ployclonal Antibody

Catalogue No	Product Name	Assay Type	Reactivity
PD-00454pA	KCNB1 Polyclonal Rabbit IgG	IHC,WB,ELISA	Human, Mouse, Rat
PD-00456pA	AAK1 Polyclonal Rabbit IgG	IHC,WB,ELISA	Human, Mouse, Rat
PD-00457pA	AANAT Polyclonal Rabbit IgG	IHC,WB,ELISA	Human, Mouse, Rat
PD-00458pA	AARS2 Polyclonal Rabbit IgG	IHC,WB,ELISA	Human, Mouse, Rat
PD-00459pA	AARSD1 Polyclonal Rabbit IgG	IHC,WB,ELISA	Human, Mouse, Rat
PD-00461pA	AATF Polyclonal Rabbit IgG	IHC,WB,ELISA	Human, Mouse, Rat
PD-00462pA	ABCA2 Polyclonal Rabbit IgG	IHC,WB,ELISA	Human, Mouse, Rat
PD-00463pA	ABCB11 Polyclonal Rabbit IgG	IHC,WB,ELISA	Human, Mouse, Rat
PD-00464pA	ABCB6 Polyclonal Rabbit IgG	IHC,WB,ELISA	Human, Mouse, Rat
PD-00465pA	ABCB7 Polyclonal Rabbit IgG	IHC,WB,ELISA	Human, Mouse, Rat
PD-00466pA	ABCB8 Polyclonal Rabbit IgG	IHC,WB,ELISA	Human, Mouse, Rat
PD-00467pA	ABCC12 Polyclonal Rabbit IgG	IHC,WB,ELISA	Human, Mouse, Rat
PD-00468pA	ABCC5 Polyclonal Rabbit IgG	IHC,WB,ELISA	Human, Mouse, Rat
PD-00469pA	ABCC6 Polyclonal Rabbit IgG	IHC,WB,ELISA	Human, Mouse, Rat
PD-00470pA	ABCC9 Polyclonal Rabbit IgG	IHC,WB,ELISA	Human, Mouse, Rat
PD-00471pA	ABCD2 Polyclonal Rabbit IgG	IHC,WB,ELISA	Human, Mouse, Rat
PD-00472pA	ABCF1 Polyclonal Rabbit IgG	IHC,WB,ELISA	Human, Mouse, Rat
PD-00473pA	ABCF3 Polyclonal Rabbit IgG	IHC,WB,ELISA	Human, Mouse, Rat
PD-00474pA	ABHD12 Polyclonal Rabbit IgG	IHC,WB,ELISA	Human, Mouse, Rat
PD-00475pA	ABHD14B Polyclonal Rabbit IgG	IHC,WB,ELISA	Human, Mouse, Rat
PD-00476pA	ABHD17B Polyclonal Rabbit IgG	IHC,WB,ELISA	Human, Mouse, Rat
PD-00477pA	ABHD5 Polyclonal Rabbit IgG	IHC,WB,ELISA	Human, Mouse, Rat
PD-00478pA	ABHD6 Polyclonal Rabbit IgG	IHC,WB,ELISA	Human, Mouse, Rat
PD-00479pA	ABI1 Polyclonal Rabbit IgG	IHC,WB,ELISA	Human, Mouse, Rat



PD-00480pA	ABLIM3 Polyclonal Rabbit IgG	IHC,WB,ELISA	Human, Mouse, Rat
PD-00481pA	ACAA2 Polyclonal Rabbit IgG	IHC,WB,ELISA	Human, Mouse, Rat
PD-00482pA	ACAD8 Polyclonal Rabbit IgG	IHC,WB,ELISA	Human, Mouse, Rat
PD-00483pA	ACADS Polyclonal Rabbit IgG	IHC,WB,ELISA	Human, Mouse, Rat
PD-00484pA	ACAT2 Polyclonal Rabbit IgG	IHC,WB,ELISA	Human, Mouse, Rat
PD-00485pA	ACD Polyclonal Rabbit IgG	IHC,WB,ELISA	Human, Mouse, Rat
PD-00486pA	ACE Polyclonal Rabbit IgG	IHC,WB,ELISA	Human, Mouse, Rat
PD-00487pA	ACE2 Polyclonal Rabbit IgG	IHC,WB,ELISA	Human, Mouse, Rat
PD-00488pA	ACHE Polyclonal Rabbit IgG	IHC,WB,ELISA	Human, Mouse, Rat
PD-00489pA	ACKR3 Polyclonal Rabbit IgG	IHC,WB,ELISA	Human, Mouse, Rat
PD-00490pA	ACLY Polyclonal Rabbit IgG	IHC,WB,ELISA	Human, Mouse, Rat
PD-00491pA	ACO1 Polyclonal Rabbit IgG	IHC,WB,ELISA	Human, Mouse, Rat
PD-00492pA	ACO2 Polyclonal Rabbit IgG	IHC,WB,ELISA	Human, Mouse, Rat
PD-00493pA	ACOT8 Polyclonal Rabbit IgG	IHC,WB,ELISA	Human, Mouse, Rat
PD-00494pA	ACOX1 Polyclonal Rabbit IgG	IHC,WB,ELISA	Human, Mouse, Rat
PD-00495pA	ACP2 Polyclonal Rabbit IgG	IHC,WB,ELISA	Human, Mouse, Rat
PD-00496pA	ACSBG1 Polyclonal Rabbit IgG	IHC,WB,ELISA	Human, Mouse, Rat
PD-00497pA	ACSF2 Polyclonal Rabbit IgG	IHC,WB,ELISA	Human, Mouse, Rat
PD-00498pA	ACSL3 Polyclonal Rabbit IgG	IHC,WB,ELISA	Human, Mouse, Rat
PD-00499pA	ACSL4 Polyclonal Rabbit IgG	IHC,WB,ELISA	Human, Mouse, Rat
PD-00500pA	ACTA1 Polyclonal Rabbit IgG	IHC,WB,ELISA	Human, Mouse, Rat
PD-00501pA	ACTA2 Polyclonal Rabbit IgG	IHC,WB,ELISA	Human, Mouse, Rat
PD-00502pA	ACTB Polyclonal Rabbit IgG	IHC,WB,ELISA	Human, Mouse, Rat
PD-00503pA	ACTG1 Polyclonal Rabbit IgG	IHC,WB,ELISA	Human, Mouse, Rat



PD-00507pA	ACTN4 Polyclonal Rabbit IgG	IHC,WB,ELISA	Human, Mouse, Rat
PD-00508pA	ACTR1A Polyclonal Rabbit IgG	IHC,WB,ELISA	Human, Mouse, Rat
PD-00509pA	ACTR2 Polyclonal Rabbit IgG	IHC,WB,ELISA	Human, Mouse, Rat
PD-00510pA	ACVR1 Polyclonal Rabbit IgG	IHC,WB,ELISA	Human, Mouse, Rat
PD-00511pA	ACVR1B Polyclonal Rabbit IgG	IHC,WB,ELISA	Human, Mouse, Rat
PD-00512pA	ACVR1C Polyclonal Rabbit IgG	IHC,WB,ELISA	Human, Mouse, Rat
PD-00513pA	ACVR2A Polyclonal Rabbit IgG	IHC,WB,ELISA	Human, Mouse, Rat
PD-00514pA	ACVR2B Polyclonal Rabbit IgG	IHC,WB,ELISA	Human, Mouse, Rat
PD-00515pA	ADA Polyclonal Rabbit IgG	IHC,WB,ELISA	Human, Mouse, Rat
PD-00516pA	ADAM10 Polyclonal Rabbit IgG	IHC,WB,ELISA	Human, Mouse, Rat
PD-00517pA	ADAM15 Polyclonal Rabbit IgG	IHC,WB,ELISA	Human, Mouse, Rat
PD-00518pA	ADAM17 Polyclonal Rabbit IgG	IHC,WB,ELISA	Human, Mouse, Rat
PD-00519pA	ADAMTS1 Polyclonal Rabbit IgG	IHC,WB,ELISA	Human, Mouse, Rat
PD-00520pA	ADAMTS5 Polyclonal Rabbit IgG	IHC,WB,ELISA	Human, Mouse, Rat
PD-00521pA	ADAP2 Polyclonal Rabbit IgG	IHC,WB,ELISA	Human, Mouse, Rat
PD-00522pA	ADCK4 Polyclonal Rabbit IgG	IHC,WB,ELISA	Human, Mouse, Rat
PD-00523pA	ADCY2 Polyclonal Rabbit IgG	IHC,WB,ELISA	Human, Mouse, Rat
PD-00524pA	ADCY3 Polyclonal Rabbit IgG	IHC,WB,ELISA	Human, Mouse, Rat
PD-00525pA	ADCY4 Polyclonal Rabbit IgG	IHC,WB,ELISA	Human, Mouse, Rat
PD-00526pA	ADCY5 Polyclonal Rabbit IgG	IHC,WB,ELISA	Human, Mouse, Rat
PD-00527pA	ADCYAP1 Polyclonal Rabbit IgG	IHC,WB,ELISA	Human, Mouse, Rat



PD-00528pA	ADD1 Polyclonal Rabbit IgG	IHC,WB,ELISA	Human, Mouse, Rat
PD-00529pA	ADH5 Polyclonal Rabbit IgG	IHC,WB,ELISA	Human, Mouse, Rat
PD-00530pA	ADHFE1 Polyclonal Rabbit IgG	IHC,WB,ELISA	Human, Mouse, Rat
PD-00531pA	ADK Polyclonal Rabbit IgG	IHC,WB,ELISA	Human, Mouse, Rat
PD-00532pA	ADM2 Polyclonal Rabbit IgG	IHC,WB,ELISA	Human, Mouse, Rat
PD-00533pA	ADNP Polyclonal Rabbit IgG	IHC,WB,ELISA	Human, Mouse, Rat
PD-00534pA	ADRA1A Polyclonal Rabbit IgG	IHC,WB,ELISA	Human, Mouse, Rat
PD-00535pA	ADRA1B Polyclonal Rabbit IgG	IHC,WB,ELISA	Human, Mouse, Rat
PD-00536pA	ADRA2A Polyclonal Rabbit IgG	IHC,WB,ELISA	Human, Mouse, Rat
PD-00537pA	ADRB1 Polyclonal Rabbit IgG	IHC,WB,ELISA	Human, Mouse, Rat
PD-00538pA	ADRBK1 Polyclonal Rabbit IgG	IHC,WB,ELISA	Human, Mouse, Rat
PD-00539pA	ADRBK2 Polyclonal Rabbit IgG	IHC,WB,ELISA	Human, Mouse, Rat
PD-00540pA	ADRM1 Polyclonal Rabbit IgG	IHC,WB,ELISA	Human, Mouse, Rat
PD-00541pA	AEBP1 Polyclonal Rabbit IgG	IHC,WB,ELISA	Human, Mouse, Rat
PD-00542pA	AFAP1 Polyclonal Rabbit IgG	IHC,WB,ELISA	Human, Mouse, Rat
PD-00543pA	AGA Polyclonal Rabbit IgG	IHC,WB,ELISA	Human, Mouse, Rat
PD-00544pA	AGFG1 Polyclonal Rabbit IgG	IHC,WB,ELISA	Human, Mouse, Rat
PD-00545pA	AGO2 Polyclonal Rabbit IgG	IHC,WB,ELISA	Human, Mouse, Rat
PD-00546pA	AGPAT4 Polyclonal Rabbit IgG	IHC,WB,ELISA	Human, Mouse, Rat
PD-00547pA	AGPS Polyclonal Rabbit IgG	IHC,WB,ELISA	Human, Mouse, Rat
PD-00548pA	AGT/Angiotensin-1 Polyclonal Rabbit IgG	IHC,WB,ELISA	Human, Mouse, Rat
PD-00549pA	AGT/Angiotensin-3 Polyclonal Rabbit IgG	IHC,WB,ELISA	Human, Mouse, Rat



Protein&Peptide	
Catalog No.	Description of Item
pdp0002	KLH (keyhole limpet hemocyanin)
pdp0003	OVA (ovalbumin)
pdp0004	THY (thyroglobulin,TG)
pdp0006	Recomb Protein G-HRP
pdp0007	Streptavidin,SA
pdp0008	Recomb Protein G/FITC
pdp0009	Recomb Protein A
pdp0010	Recomb Protein G
pdp0011	Cholesterol
pdp0019	β -Amyloid 1-42 CT
pdp0024	CCP peptide (cyclic citrullinated peptide,CCP)
pdp0026	GLP-1(Glucagon-like peptide-1)(7-36)
pdp0027	GRGDS peptide
pdp0029	MBP Antigen(Myelin PUDAsic Protein, MBP)
pdp0031	GRP(Gastrin Releasing Peptide)
pdp0035	VIP (Vasoactive Intestinal peptide)
pdp0037	TP-5(Thymopentin)
pdp0038	Galanin
pdp0039	GLP-2(Glucagon-like peptide-2)
pdp0045	CCK8 (Cholecystokinin-8 Peptide)
pdp0046	SP (SuPUDAtance P)
pdp0051	Tachyplesin I(Tachyplesin-1 precursor)
pdp0055	ShK(Stichodactyla helianthus Neurotoxin)
pdp0061	rHBcAg
pdp0064	AAT(Alpha-1antitrypsin)
pdp0067	ACTH (Adrenocorticotrophin hormones)(7-23)
pdp0068	Actin
pdp0072	AGER
pdp0075	Adenylate Kinase 1 (AK-1)
pdp0077	Akt/PKB
pdp0081	AM Adrenomedullin
pdp0082	TIMP-2(Tissue Inhibitor of Metalloproteinase-2)
pdp0084	ADM R, Adrenomedullin receptor
pdp0089	AR (Androgen Receptor)
pdp0090	AT (Angiotenogen)
pdp0091	Apo-E (Apolipoprotein E)
pdp0093	ILK-1 (Integrin-linked protein kinase 1)
pdp0096	AQP-2 (aquaporin Protein-2)
pdp0100	Bcl-2
pdp0102	bFGF
pdp0103	BNP (Brain Natriuretic Peptide)
pdp0104	BrdU (Bromodeoxyuridine)
pdp0107	CAD(Caspase-Activated Deoxyribonuclease)



pdp0108	Calponin 1
pdp0115	Caspase-10
pdp0118	CD31 (PECAM-1)
pdp0119	Immunoglobulin binding protein-1(CD79A)IGBP-1
pdp0120	CD133 antigen
pdp0122	ChAT(Choline Acetyltransferase)
pdp0125	CR (Calretinin)

ELISA KIT FAQs

Q: Do you offer standards or controls in every ELISA kit?

We offer positive and negative controls in qualitative ELISA kits, while we offer standards which can work as quality control in quantitative ELISA kits. Kit standards and the entire reagent system are matched. The customer can draw a good standard curve through the experiment, which proves that the whole system including the standards works well, so the standards can play a role of quality control. We suggest you run duplicates for the standards.

Q: What kind of species is your ELISA kit specific to? Can I use your ELISA kit for the species which is not mentioned in the manual?

Different ELISA kit is designed for different species varying from human, rat, horse, rabbit, mouse, sheep, pig, bovine, dog, chicken, fish, monkey, plant, etc. Please refer to each protocol for species instruction. For different species, the antibody's specificity is different, and there is matrix interference. We can recommend the right kit if you have difficulty to find the kit of species you need.

Q: Can I incubate at room temperature?

Incubation is performed at 37°C for all ELISA kits except for food safety & drug residues ELISA kits as it is the best temperature for combination of antigen and antibody. We do not recommend the room temperature since it is not stable.

Q: Are the plates pre-coated? How can I store the remaining wells or plates if I can not use in one time?

Yes. The strips are movable and it's recommended to separate those wells needed for assay and store the rest at 2-8°C in the dark without germ contamination.

Q: What is the shelf life of the products?

The expiration date is shown on the label of each kit. Generally, our ELISA kit has a shelf life of 6 months from the date of production if it is unopened and stored at 2-8°C. For opened kit, please refer to the protocol for component-specific storage instructions.

Antibody FAQs

Q: How can I choose the correct antibody for my experiment?

The rules you should pay attention to are as follows: the species of samples, the host species of antibodies, the labeling of antibodies, the recommended dilution ratio for the application of interest.

Q: What is the difference between monoclonal antibodies and polyclonal antibodies?



Monoclonal antibodies are made using identical immune cells that are all clones of a specific parent cell. As such, they will have affinity for the same antigen and epitope. Polyclonal antibodies are made using several different immune cells. They will have affinity for the same antigen but different epitopes. Monoclonal antibodies bind only a single epitope while polyclonal antibodies bind different epitopes on the same protein. Monoclonal antibodies are much more specific and with less background noise than polyclonal antibodies, and are as such generally preferable for biochemical assays. However, they are also usually more expensive to produce, less robust and are very sensitive to small changes in the antigen.

Q: What is the relationship between primary antibody and secondary antibody? How can I select the right secondary antibody for my experiment?

In general, primary antibody is used to capture the target protein, secondary antibody can bind to primary antibody and is labeled with an enzyme or dye that can be amplified for detection. We suggest you consider the following elements:

- a. Depending on the host species. For example, if the primary antibody is from mouse, the secondary antibody should be anti-mouse.
- b. Depending on the characteristics of primary antibody.
- c. Depending on your applications, such as WB, IHC, ELISA, etc.

Q: What is the shelf life of the antibody?

The shelf life of the antibody is affected by storage state, storage temperature, buffer ingredients, etc. Generally, the shelf life of our antibody is at least 12 months from the manufacturing date.

Order FAQs

Order FAQs

Q: Do you have a product catalogue?

Yes, we have an e-catalogue, please contact us for details.

Q: How much is shipping? What is the shipping condition of the products?

The freight cost differs from country to country and also depending on how many products you order. You are welcome to contact us or your local distributor to request freight cost of your place. We ship all products with ice bags.

Q: How can I buy your products in my area?

Please try to contact with the distributors in your local place. If you cannot find any one, please send your inquiries to puda@pudascience.com or lcgynonne88@yahoo.com.

